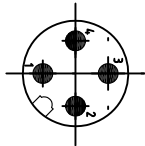
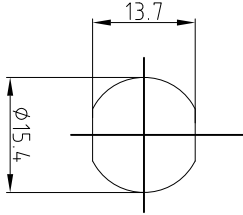


MALE END VIEW

SUGGESTED PANEL CUT OUT

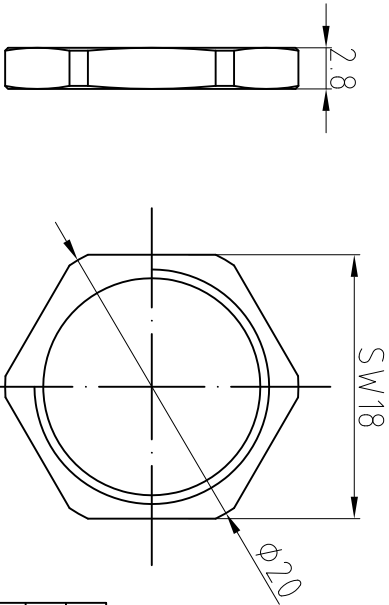
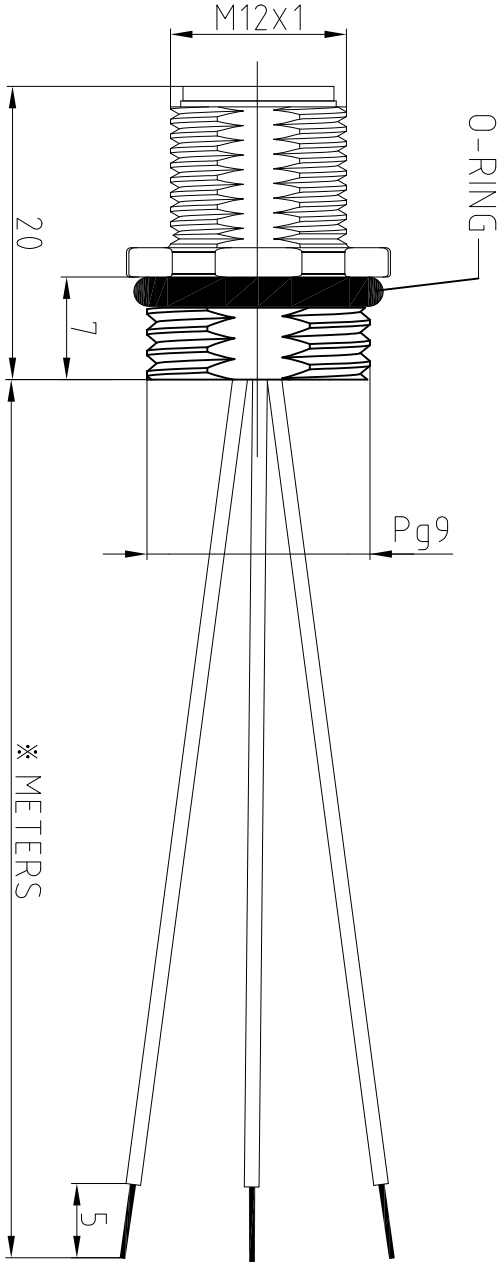
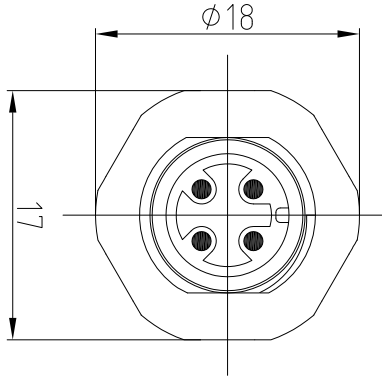


1=BN
2=N/C
3=BU
4=BK



SPECIFICATIONS

CONTACT CARRIER MATERIAL/COLOR	TPU/BLACK
CONTACT/PLATING	BRASS/GOLD
HOUSING MATERIAL/PLATING	BRASS/NICKEL
O-RING MATERIAL	NBR
OPERATING CURRENT	4 A
OPERATING VOLTAGE	250 V
CONDUCTOR INSULATION MATERIAL	PVC
NUMBER OF CONDUCTORS (AWG)	3 x 22 AWG
OPERATING TEMPERATURE	-20°C — +85°C
PROTECTION CLASS	IEC IP67



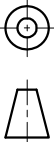
CABLE LENGTH	TOLERANCE
ALL LENGTHS	±4%(OR 50mm) OF LENGTH -0%(OR 0mm) OF LENGTH WHICHEVER IS GREATER
STRIP LENGTH	TOLERANCE
0 - 7mm	± 1.0mm
8 - 29mm	± 1.5mm
30 - 49mm	± 2.0mm
50 - 69mm	± 3.0mm
70 - 100mm	± 4.0mm
over 100mm	± 5.0mm

UNIT OF MEASUREMENT	MILLIMETER
Approved:	Date: 2018.4.27
Process YJF	Date: 2018.5.24
Checked YJ	Date: 2018.5.3
Designed LXH	Date: 2018.4.27

Tianjin Geneuo Technology Co., Ltd



Description:
FEZ321-*



www.gsee-tech.cn
www.gsee-tech.com

REV
A

REV	COUNT	DESCRIPTION OF REVISIONS	BY	CHECKED	DATE